

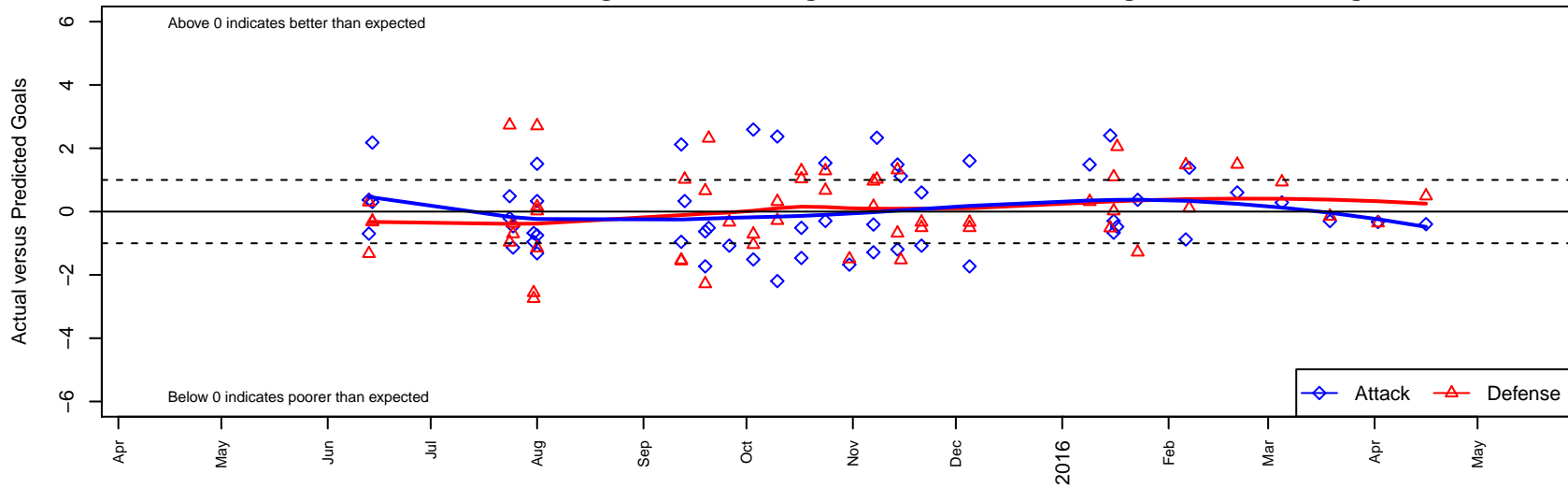
WA Rush Nero G02

Washington Rush SC
 Everett, WA
 G02 total strength=817
 attack=1.05 defense=1.07
 fall league = NPSL Div 3 U13, RCL G02 Div 3
 spr league = Win RCL G02 Div 3

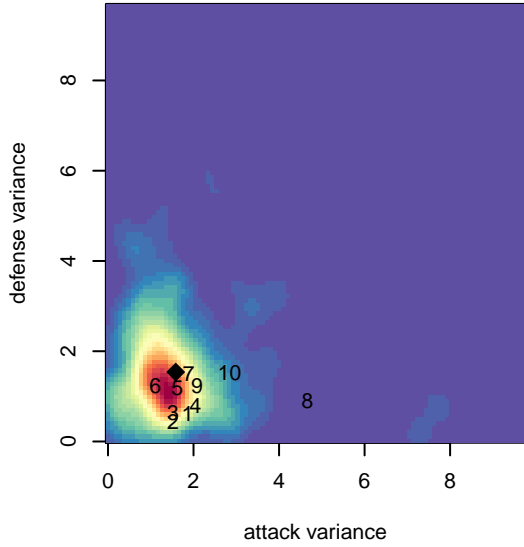
alt names used:
 Rush Select G02 Nero
 Rush Select G02 Nero
 Rush Select G02 Nero
 Washington Rush G02 Nero B
 WASHINGTON RUSH WA RUSH G02 NERO ('
 WA Rush G02 Nero
 Washington Rush G02 Nero B
 Washington Rush G02 Nero B

Venues played:
 2015 Skagit Firecracker Silver U13-14
 2015 Crossfire Select GU13 Silver
 2015 Strawberry Classic GU13
 2015 WA Rush Cup GU13 Silver U13
 2015 NPSL Division 3 U13
 2015 RCL G02 Div 3
 2015 Win RCL G02 Div 3
 2015 PacNW Winter Classic Premier II U13
 2015 WYS Presidents Cup G02 Division 1

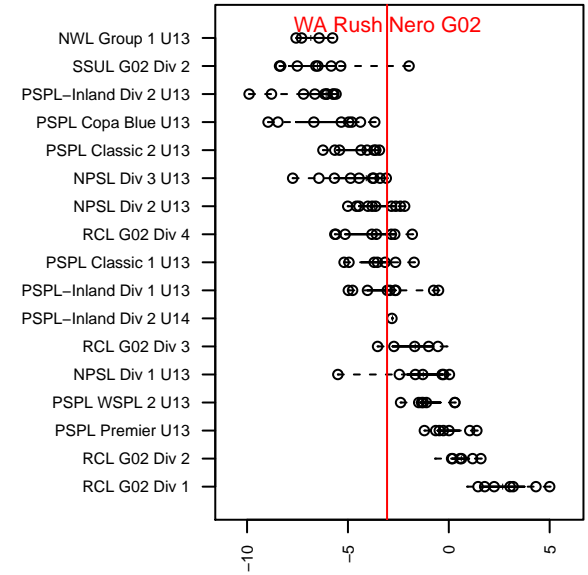
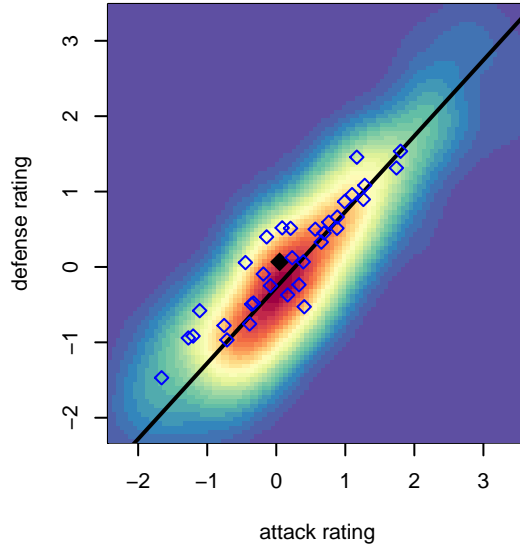
WA Rush Nero G02
 Dots are actual minus expected GF (blue circles) and GA (red triangles).
 Blue line is smoothed change in attack strength. Red is smoothed change in defense strength.



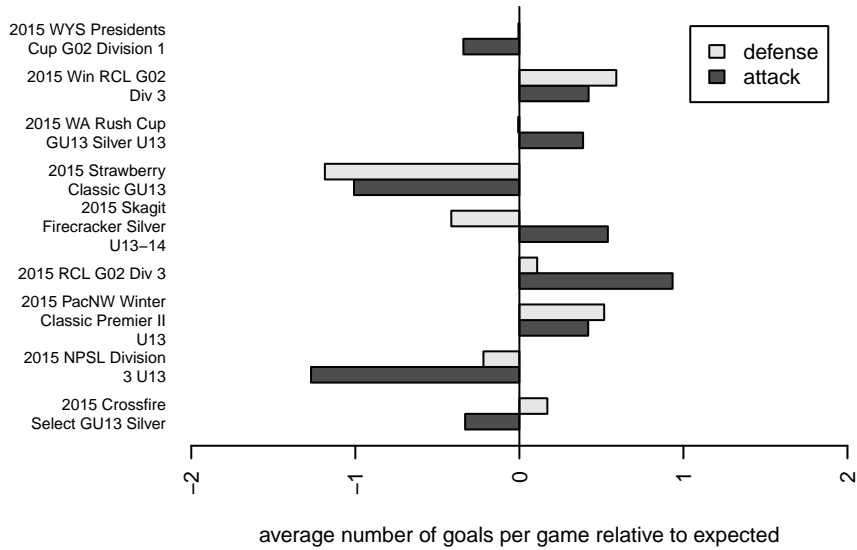
**attack and defense variance (black dot)
relative to other teams
and top 10 in region**



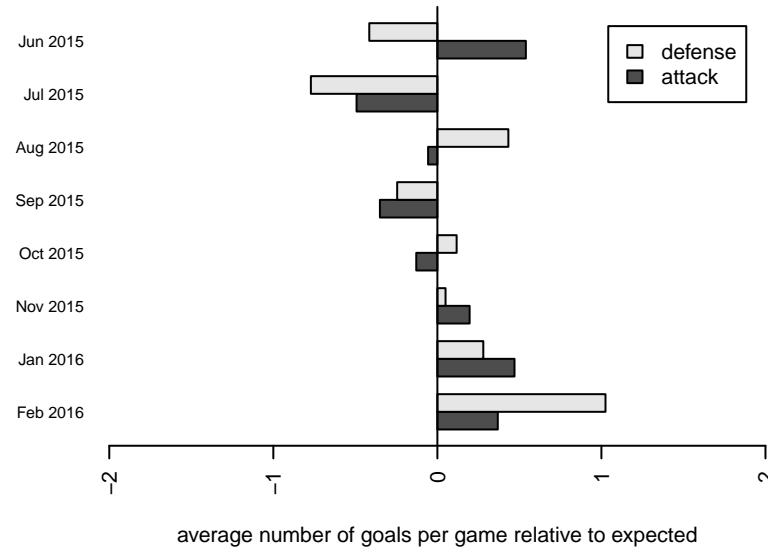
**attack and defense rating
relative to others at age
and all opponents in last 13 months**



Performance relative to 13 month average



Performance relative to 13 month average



date	home		away		venue	pred.home	pred.away
2016-04-16	PacNW Blue G02	3	WA Rush Nero G02	0	2015 WYS Presidents Cup G02 Division 1	3.49	0.40
2016-04-02	Seattle United Tango G02	4	WA Rush Nero G02	0	2015 WYS Presidents Cup G02 Division 1	3.64	0.33
2016-03-19	WA Rush Nero G02	0	SSC Shadow A G02	6	2015 WYS Presidents Cup G02 Division 1	0.30	5.85
2016-03-05	WA Rush Nero G02	1	Whatcom FC Rangers Blue G02	1	2015 Win RCL G02 Div 3	0.71	1.93
2016-02-21	WA Rush Nero G02	1	PacNW Blue G02	2	2015 Win RCL G02 Div 3	0.40	3.49
2016-02-07	Eastside FC Blue G02	1	WA Rush Nero G02	2	2015 Win RCL G02 Div 3	1.11	0.62
2016-02-06	RV Slammers Orange G02	0	WA Rush Nero G02	0	2015 Win RCL G02 Div 3	1.47	0.88
2016-01-23	WA Rush Nero G02	1	Snohomish United Black G02	3	2015 Win RCL G02 Div 3	0.63	1.72
2016-01-17	FC Edmonds Black Ice G02	0	WA Rush Nero G02	0	2015 PacNW Winter Classic Premier II U13	2.05	0.48
2016-01-16	PacNW White G02	1	WA Rush Nero G02	0	2015 PacNW Winter Classic Premier II U13	1.02	0.67
2016-01-16	Eastside FC White G02	2	WA Rush Nero G02	0	2015 Win RCL G02 Div 3	3.10	0.30
2016-01-15	WA Rush Nero G02	5	Eastside FC Grey G02	1	2015 PacNW Winter Classic Premier II U13	2.60	0.48
2016-01-09	WA Rush Nero G02	2	Harbor Premier Green G02	2	2015 Win RCL G02 Div 3	0.52	2.31
2015-12-05	WA Rush Nero G02	0	Seattle United NE Blue G02	1	2015 NPSL Division 3 U13	1.73	0.66
2015-12-05	WA Rush Nero G02	2	PacNW Blue G02	4	2015 RCL G02 Div 3	0.40	3.49
2015-11-21	BIFC Blue G02	1	WA Rush Nero G02	0	2015 NPSL Division 3 U13	0.66	1.08
2015-11-21	PacNW Blue G02	4	WA Rush Nero G02	1	2015 RCL G02 Div 3	3.49	0.40
2015-11-15	WA Rush Nero G02	2	RV Slammers Orange G02	3	2015 RCL G02 Div 3	0.88	1.47
2015-11-14	Seattle United W Blue G02	1	WA Rush Nero G02	1	2015 NPSL Division 3 U13	0.32	2.20
2015-11-14	WA Rush Nero G02	2	Harbor Premier Green G02	1	2015 RCL G02 Div 3	0.52	2.31
2015-11-08	WA Rush Nero G02	3	PacNW White G02	0	2015 RCL G02 Div 3	0.67	1.02
2015-11-07	WA Rush Nero G02	3	MIFC Wildcats G02	0	2015 NPSL Division 3 U13	4.29	0.16
2015-11-07	WA Rush Nero G02	0	WPFC B G02	2	2015 RCL G02 Div 3	0.41	2.96
2015-10-31	Blackhills FC Red G02	3	WA Rush Nero G02	0	2015 NPSL Division 3 U13	1.50	1.68
2015-10-24	WA Rush Nero G02	2	Southlake Select Red Tigers G02	0	2015 NPSL Division 3 U13	2.30	0.67
2015-10-24	Three Rivers SC Green RCL G02	0	WA Rush Nero G02	3	2015 RCL G02 Div 3	1.29	1.46
2015-10-17	Seattle United S White G02	0	WA Rush Nero G02	1	2015 NPSL Division 3 U13	1.03	1.51
2015-10-17	WA Rush Nero G02	0	Three Rivers SC Green RCL G02	0	2015 RCL G02 Div 3	1.46	1.29

date	home		away		venue	pred.home	pred.away
2015-10-10	WA Rush Nero G02	0	Seattle United W Blue G02	0	2015 NPSL Division 3 U13	2.20	0.32
2015-10-10	WA Rush Nero G02	3	Snohomish United Black G02	2	2015 RCL G02 Div 3	0.63	1.72
2015-10-03	Seattle United S Black G02	2	WA Rush Nero G02	0	2015 NPSL Division 3 U13	1.28	1.51
2015-10-03	WPFC B G02	4	WA Rush Nero G02	3	2015 RCL G02 Div 3	2.96	0.41
2015-09-26	WA Rush Nero G02	0	BIFC Blue G02	1	2015 NPSL Division 3 U13	1.08	0.66
2015-09-20	Harbor Premier Green G02	0	WA Rush Nero G02	0	2015 RCL G02 Div 3	2.31	0.52
2015-09-19	Seattle United NE Blue G02	0	WA Rush Nero G02	0	2015 NPSL Division 3 U13	0.66	1.73
2015-09-19	Snohomish United Black G02	4	WA Rush Nero G02	0	2015 RCL G02 Div 3	1.72	0.63
2015-09-13	PacNW White G02	0	WA Rush Nero G02	1	2015 RCL G02 Div 3	1.02	0.67
2015-09-12	WA Rush Nero G02	1	Snohomish United Red G02	2	2015 NPSL Division 3 U13	1.96	0.44
2015-09-12	RV Slammers Orange G02	3	WA Rush Nero G02	3	2015 RCL G02 Div 3	1.47	0.88
2015-08-01	NSC Thunder G02	1	WA Rush Nero G02	0	2015 Strawberry Classic GU13	1.15	0.75
2015-08-01	PSA Force G02	2	WA Rush Nero G02	0	2015 Strawberry Classic GU13	0.85	1.32
2015-08-01	Kent United Green G02	0	WA Rush Nero G02	2	2015 WA Rush Cup GU13 Silver U13	2.71	0.49
2015-08-01	PacNW White G02	1	WA Rush Nero G02	1	2015 WA Rush Cup GU13 Silver U13	1.02	0.67
2015-07-31	WA Rush Nero G02	1	Snohomish United Red G02	3	2015 Strawberry Classic GU13	1.96	0.44
2015-07-31	Highline Premier Blue G02	5	WA Rush Nero G02	0	2015 WA Rush Cup GU13 Silver U13	2.25	0.68
2015-07-25	WA Rush Nero G02	0	PCU Red G02	2	2015 Crossfire Select GU13 Silver	1.14	1.29
2015-07-25	Seattle Celtic White G02	1	WA Rush Nero G02	1	2015 Crossfire Select GU13 Silver	0.62	1.46
2015-07-24	WA Rush Nero G02	2	Seattle United S White G02	2	2015 Crossfire Select GU13 Silver	1.51	1.03
2015-07-24	WA Rush G02	2	WA Rush Nero G02	0	2015 Crossfire Select GU13 Silver	4.73	0.21
2015-06-14	WA Rush Nero G02	4	NW United Classic G02	1	2015 Skagit Firecracker Silver U13-14	1.82	0.69
2015-06-14	CSC Velocity Green G01	2	WA Rush Nero G02	1	2015 Skagit Firecracker Silver U13-14	1.67	0.70
2015-06-13	CSC Velocity Green G01	3	WA Rush Nero G02	0	2015 Skagit Firecracker Silver U13-14	1.67	0.70
2015-06-13	Richmond FC Red Devils 2003G	0	WA Rush Nero G02	3	2015 Skagit Firecracker Silver U13-14	0.30	2.63